



GRU DA CITTÀ SENZA CUSPIDE - TOP LESS CITY CRANE
CITY CRANE SANS POINCON - CITY KRAN OHNE TURMSPITZE

MRT102



RAIMONDI



Scheda Tecnica
Technical Data Sheet
Spécific Techniques
Technische Spezifikationen

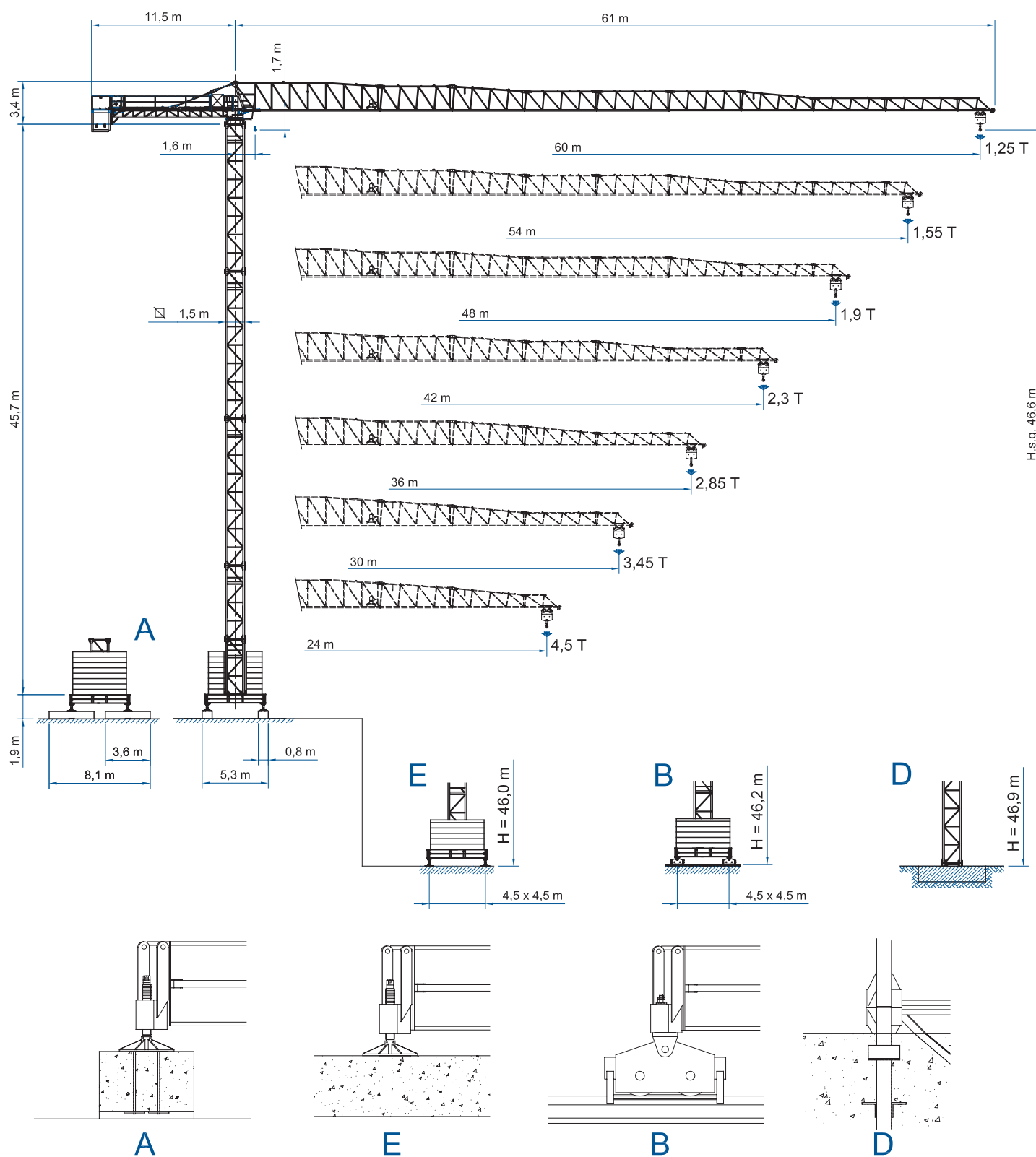
MRT102

GRU DA CITTÀ SENZA CUSPIDE - TOP LESS CITY CRANE
CITY CRANE SANS POINCON - CITY KRAN OHNE TURMSPITZE

RAIMONDI



A3 FEM1,001



ALTEZZA SOTTOGANCIO

Height under hook / Hauteur sous crochet / Hakenhöhe

□ 1,5m - L=3,8m □ 1,5m

| H (m) | Z (t) | F1 (kN) | H (m) | Z (t) | F1 (kN) | H (m) | Z (t) | F1 (kN) | H (m) | Z (t) | F1 (kN) |
|------------|-------|---------|------------|-------|---------|------------|-------|---------|------------|-------|---------|
| 7 | - | - | 7 | - | - | 7 | - | - | 7 | - | - |
| 6 | - | - | 6 | - | - | 6 | - | - | 6 | 46,9 | 1328 |
| 5 | 42,2 | 80,6 | 5 | 41,8 | 76,7 | 5 | 41,6 | 76,7 | 5 | 41,0 | 1013 |
| 4 | 36,3 | 62,9 | 4 | 35,9 | 59,0 | 4 | 35,7 | 59,0 | 4 | 35,1 | 743 |
| 3 | 30,4 | 57,0 | 3 | 30,0 | 53,1 | 3 | 29,8 | 53,1 | 3 | 29,2 | 610 |
| 2 | 24,5 | 51,1 | 2 | 24,1 | 47,2 | 2 | 23,9 | 47,2 | 2 | 23,3 | 545 |
| 5,9m +1 | 18,6 | 51,1 | 5,9m +1 | 18,2 | 47,2 | 5,9m +1 | 18,0 | 47,2 | 5,9m +1 | 17,4 | 490 |

□ 1,5m - L=4,5m □ 1,5m




| H (m) | Z (t) | F1 (kN) | H (m) | Z (t) | F1 (kN) | H (m) | Z (t) | F1 (kN) | H (m) | F2 (kN) | F3 (kN) |
|------------|-------|---------|------------|-------|---------|------------|-------|---------|-------|---------|---------|
| 7 | - | - | 7 | - | - | 7 | - | - | 7 | 55,7 | 1762 |
| 4,4m | 46,6 | 68,8 | 4,4m | 46,2 | 64,9 | 4,4m | 46,0 | 64,9 | 6 | 1762 | 1500 |
| 6 | 46,6 | 68,8 | 6 | 46,2 | 64,9 | 6 | 46,0 | 64,9 | 5 | | |
| 5 | 42,2 | 62,9 | 5 | 41,8 | 59,0 | 5 | 41,6 | 59,0 | 4 | | |
| 4 | 36,3 | 45,2 | 4 | 35,9 | 41,3 | 4 | 35,7 | 41,3 | 3 | | |
| 3 | 30,4 | 33,4 | 3 | 30,0 | 41,3 | 3 | 29,8 | 41,3 | 2 | | |
| 2 | 24,5 | 33,4 | 2 | 24,1 | 35,4 | 2 | 23,9 | 35,4 | 1 | | |
| 5,9m +1 | 18,6 | 33,4 | 5,9m +1 | 18,2 | 35,4 | 5,9m +1 | 18,0 | 35,4 | 0 | | |

□ 1,7/1,5m - L=4,5m □ 1,7/1,5m - L=6,0m □ 1,5/1,7m

| H (m) | Z (t) | F1 (kN) | H (m) | Z (t) | F1 (kN) | H (m) | F2 (kN) | F3 (kN) |
|------------|-------|---------|------------|-------|---------|-------|---------|---------|
| 6 | 54,3 | 94,4 | 6 | 54,4 | 59 | 7 | 55,7 | 1835 |
| 5 | | | 5 | | | 6 | | |
| 4 | | | 4 | | | 5 | | |
| 3 | | | 3 | | | 4 | | |
| 2 | | | 2 | | | 3 | | |
| 5,9m +1 | | | 5,9m +1 | | | 2 | | |

PORTATA


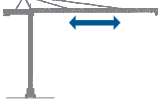

Load - Charge - Tragfähigkeit

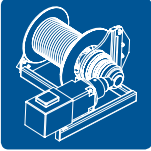


| Portata max / Max s.w.l. Charge maxi / Max. Tragfähigkeit | |  3000 Kg. | | | | | | |  6000 Kg. / 3000 Kg.  | | | | | | | | | | | | |
|--|---------------------|--|------|------|------|------|------|------|---|------|------|------|------|------|------|------|------|------|------|------|------|
| Sbraccio / Jib Ausladung /Portée | m. | 24 | 30 | 36 | 42 | 48 | 54 | 60 | 24 | 30 | 36 | 42 | 48 | 54 | 60 | | | | | | |
| Campo di portata max da Max s.w.l. range from Charge maxi de 1,6 m Max. Tragfähigkeit von | a to à bis | 24,0 | 30,0 | 34,4 | 33,2 | 32,2 | 30,5 | 28,5 | 18,6 | 18,5 | 18,4 | 17,9 | 17,5 | 16,8 | 15,8 | | | | | | |
| Sbraccio (m.) Radius (m.) Portée(m.) Ausladung(m.) | 12 | 3000 | 3000 | 3000 | 3000 | 3000 | 3000 | 3000 | 6000 | 6000 | 6000 | 6000 | 6000 | 6000 | 6000 | | | | | | |
| | 14 | 3000 | 3000 | 3000 | 3000 | 3000 | 3000 | 3000 | 6000 | 6000 | 6000 | 6000 | 6000 | 6000 | 6000 | | | | | | |
| | 16 | 3000 | 3000 | 3000 | 3000 | 3000 | 3000 | 3000 | 6000 | 6000 | 6000 | 6000 | 6000 | 6000 | 5935 | | | | | | |
| | 18 | 3000 | 3000 | 3000 | 3000 | 3000 | 3000 | 3000 | 6000 | 6000 | 6000 | 5967 | 5814 | 5537 | 5188 | | | | | | |
| | 20 | 3000 | 3000 | 3000 | 3000 | 3000 | 3000 | 3000 | 5540 | 5506 | 5458 | 5295 | 5157 | 4909 | 4597 | | | | | | |
| | 22 | 3000 | 3000 | 3000 | 3000 | 3000 | 3000 | 3000 | 4971 | 4940 | 4896 | 4749 | 4624 | 4399 | 4116 | | | | | | |
| | 24 | 3000 | 3000 | 3000 | 3000 | 3000 | 3000 | 3000 | 4500 | 4471 | 4431 | 4297 | 4183 | 3977 | 3719 | | | | | | |
| | 26 | | 3000 | 3000 | 3000 | 3000 | 3000 | 3000 | | 4077 | 4040 | 3916 | 3811 | 3622 | 3384 | | | | | | |
| | 28 | | 3000 | 3000 | 3000 | 3000 | 3000 | 3000 | | 3740 | 3707 | 3592 | 3494 | 3319 | 3098 | | | | | | |
| | 30 | | 3000 | 3000 | 3000 | 3000 | 3000 | 2828 | | 3450 | 3418 | 3311 | 3221 | 3057 | 2852 | | | | | | |
| | 32 | | | 3000 | 3000 | 3000 | 2844 | 2628 | | | 3167 | 3067 | 2982 | 2829 | 2637 | | | | | | |
| | 34 | | | | 3000 | 2923 | 2821 | 2656 | 2453 | | | 2946 | 2852 | 2772 | 2628 | 2447 | | | | | |
| | 36 | | | | 2850 | 2740 | 2645 | 2489 | 2297 | | | 2750 | 2661 | 2586 | 2450 | 2280 | | | | | |
| | 38 | | | | | 2578 | 2487 | 2340 | 2159 | | | | 2491 | 2420 | 2292 | 2130 | | | | | |
| | 40 | | | | | | 2432 | 2346 | 2206 | 2034 | | | | 2338 | 2271 | 2149 | 1996 | | | | |
| | 42 | | | | | | | 2300 | 2218 | 2085 | 1921 | | | | 2200 | 2136 | 2020 | 1874 | | | |
| | 44 | | | | | | | | 2102 | 1975 | 1819 | | | | | 2014 | 1903 | 1764 | | | |
| | 46 | | | | | | | | | 1997 | 1875 | 1726 | | | | | 1902 | 1796 | 1663 | | |
| | 48 | | | | | | | | | | 1900 | 1783 | 1641 | | | | | 1800 | 1699 | 1571 | |
| | 50 | | | | | | | | | | | 1699 | 1562 | | | | | | 1609 | 1487 | |
| 52 | | | | | | | | | | | | 1622 | 1490 | | | | | | 1526 | 1409 | |
| 54 | | | | | | | | | | | | | 1550 | 1423 | | | | | | 1450 | 1337 |
| 56 | | | | | | | | | | | | | | 1361 | | | | | | | 1270 |
| 58 | | | | | | | | | | | | | | | 1304 | | | | | | 1208 |
| 60 | | | | | | | | | | | | | | | | 1250 | | | | | 1150 |

Con sistema "ULTRALIFT" tutte le portate intermedie sono aumentate del 10%
All intermediate loads are increased of 10% if the crane is equipped with "ULTRALIFT" control
Les charges intermediaires sont augmentées de 10% si la grue est équipée avec contrôle "ULTRALIFT"

CARATTERISTICHE AZIONAMENTI PRINCIPALI

General Technical Characteristics - Caracteristiques des mecanismes de distribution - Allgemeine Technische Daten

| | | Velocità - Speed Vitesse - Geschwindigkeit | Potenza - Power Puissance - Leistung |
|--|---|---|---|
| Rotazione - Slewing Orientation - Schwenken |  | 0,23 / 0,47 / 0,71 mm ⁻¹ | 2 x 4 Kw |
| Carrello - Trolley Chariot - Katzfahren |  | 18,8 / 35,2 / 54 m/min Progressivo - Progressive | 3,6 Kw |
| Traslazione - Rail Translation - Kranfahren |  | 18 m/min | 2 x 3 Kw |



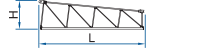

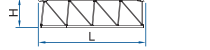


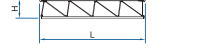
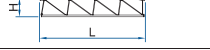


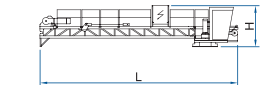

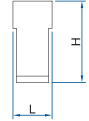

| Tipo Type Type Type |  | Potenza-power puissance - Leistung | | Fune rope cable Seil | Marcia Step Vitesse Gang |  | |  | |
|------------------------------|---|---------------------------------------|------|-------------------------------|-----------------------------------|---|-------|---|-------|
| | | CV - ch - PS - hp | kW | | | kg | m/min | kg | m/min |
| 25 HP - 6 | | 25 | 18,4 | 190 | 1 | 3000 | 7,5 | 6000 | 3,7 |
| | | | | | 2 | 3000 | 30 | 6000 | 15 |
| | | | | | 3 | 1500 | 60 | 3000 | 30 |
| 33 HP - 6 | | 33 | 24,3 | 234 | 1 | 3000 | 9,4 | 6000 | 4,7 |
| | | | | | 2 | 3000 | 37,5 | 6000 | 18,8 |
| | | | | | 3 | 1500 | 75 | 3000 | 37,5 |
| 25 HP - 6 VF | | 25 | 18,4 | 190 | 1 | 3000 | 6 | 6000 | 3 |
| | | | | | 2 | 3000 | 30 | 3000 | 15 |
| | | | | | 3 | 1500 | 60 | 3000 | 30 |
| | | | | | 4 | 1000 | 72 | 2000 | 36 |
| 33 HP - 6 VF | | 33 | 24,3 | 234 | 1 | 3000 | 7,5 | 6000 | 3,7 |
| | | | | | 2 | 3000 | 37,5 | 6000 | 18,8 |
| | | | | | 3 | 1500 | 75 | 3000 | 37,5 |
| | | | | | 4 | 1000 | 90 | 2000 | 45 |

Conforme alla direttiva 2000/14/CE sul livello acustico - In compliance with the 2000/14/CE instruction on noise level - Conforme directive 2000/14/CE sur le niveau acoustique - Gemiss 2000/14/CE ber Schall - Leistungspegel - Conforme con la directive 2000/14/CE sobre el nivel acustico

| | | |
|---|----------------|----------------|
| Forza motrice totale Total installed power Puissance totale des moteurs Gesamt-motorenleistung | 18,4 Kw (25HP) | 24,3 Kw (33HP) |
| | 36 Kw | 42 Kw |

PESI E INGOMBRI

Packing list - Liste de colisage - Kolli-Liste

| Pos. Item | Pezzi Pieces | Denominazione Description | Schizzo Sketch | Dimensioni Dimensions | | | Peso Weight (Kg) | |
|-----------|--------------|---|---|-----------------------|-------|-------|------------------|--------|
| | | | | L | W | H | Unit. | Total. |
| 1 | 1 | Elemento di freccia Jib element Elément de flèche Ausleger | N°1  | 11,960 | 1,200 | 2,380 | 2021 | - |
| | 1 | | N°2  | 6,110 | 1,200 | 2,070 | 770 | - |
| | 1 | | N°3  | 6,100 | 1,200 | 2,070 | 711 | - |
| | 1 | | N°4  | 6,070 | 1,200 | 1,660 | 570 | - |
| | 1 | | N°5  | 6,030 | 1,200 | 1,640 | 501 | - |
| | 1 | | N°6  | 6,015 | 1,200 | 1,640 | 453 | - |
| | 1 | | N°7  | 6,015 | 1,200 | 1,620 | 425 | - |
| | 1 | | N°8  | 5,985 | 1,200 | 1,070 | 387 | - |
| | 1 | | N°9  | 5,985 | 1,200 | 1,070 | 318 | - |
| | 1 | | Puntale freccia Jib point Elément pointe Spitzelement  | 2,860 | 1,200 | 1,070 | 185 | - |
| 2 | 1 | Controfreccia girevole,organo di sollev. quadro elettrico, carrello freccia etc. Counterjib-turtable, hoisting winch, trolley jib, electrical box etc. Contreflèche tournante, treuil de levage, chariot de flèche, armoire électrique etc. Gegenausleger, Hubwinde, Drehwerk Laufkatze, Schaltschrank etc.  | 11,900 | 2,230 | 2,550 | 6885 | - | |
| | 1 | Controfreccia girevole,organo di sollev. quadro elettr., carrello freccia,cabina. Counterjib-turtable, hoisting winch, acces balcony, electrical box, trolley jib, cabin etc. Contreflèche tournante,treuil de levage, chariot de flèche, armoire électrique, cabine. Gegenausl., Drehwerk, Hubwinde, Laufkatze, Kabine, Schaltschrank, Kabinepodest.  | 11,900 | 3,380 | 2,550 | 7480 | - | |
| 3 | 1 | Controfreccia girevole,organo sollev., quadro elettrico, carrello freccia,cabina elemento porta-blocchi. Counterjib-turtable, hoisting winch, cabin,trolley jib, electrical box, acces balcony,terminal element. Contrefl. tournante,treuil de levage, chariot de flèche armoire électrique, cabine et élément terminal. Gegenausl., Drehwerk, Hubwinde, Laufkatze, Kabine Schaltschrank, Kabinepodest, Gegengewichtelement.  | 13,500 | 3,380 | 2,550 | 8030 | - | |
| 4 | 6 | Blocchi di contrappeso Counterweight block Contre-poids Gegengewichtsblocke  | A99+3 | 1,430 | 0,265 | 2800 | 2131 | 12786 |
| | 2 | | B99+3  | 1,430 | 0,210 | 2,800 | 1684 | 3368 |

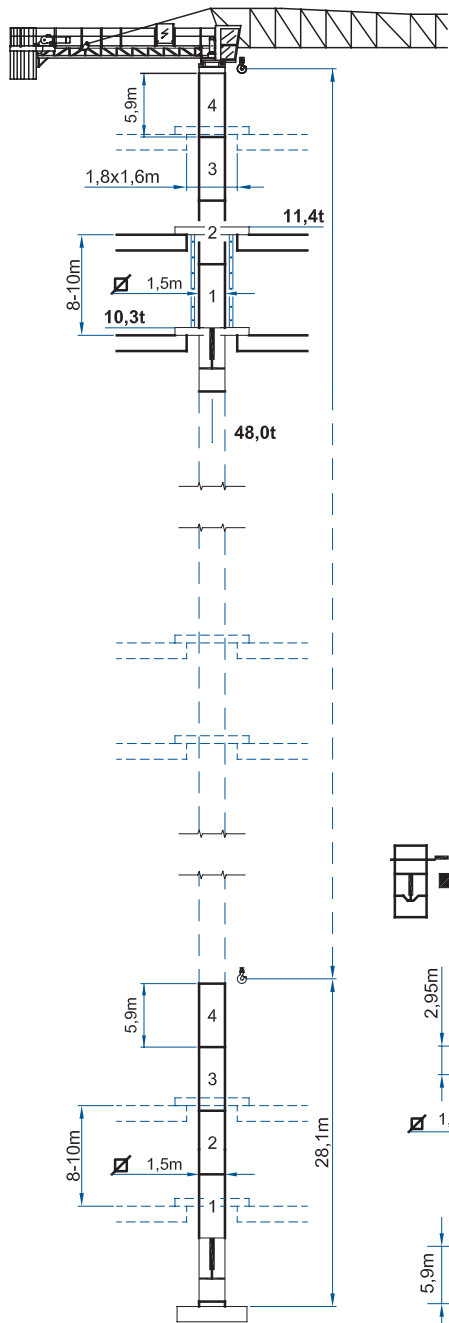
PESI E INGOMBRI

Packing list - Liste de colisage - Kolli-Liste

| Pos. Item | Pezzi Pieces | Denominazione Description | Schizzo Sketch | Dimensioni Dimensions | | | Peso Weight (Kg) | | |
|-------------------|--------------|--|----------------|-----------------------|-------|-------|------------------|--------|------|
| | | | | L | W | H | Unit. | Total. | |
| 6 | - | Elemento di torre Tower element Elément de mature Turmstück | | 2,950 | 1,700 | 1,500 | 1172 | - | |
| 7 | - | | | 4,425 | 1,700 | 1,500 | 1590 | - | |
| 8 | - | | | 5,900 | 1,700 | 1,500 | 1990 | - | |
| 9 | - | | | 11,800 | 1,700 | 1,500 | 3682 | - | |
| 10 | 1 | Tronchetto di fondazione Expendable foundation element Elément a sceller Fundamentanker | | 1,465 | 1,780 | 1,780 | 780 | - | |
| 11 | 1 | Trave principale della crociera di base Base main beam Poutre de chassis de base Hauptträger für Kreuzgelenk | | 4,5x4,5mt | 6,530 | 0,710 | 0,760 | 2120 | - |
| | | | | 3,8x3,8mt | 5,535 | 0,710 | 0,760 | 1460 | - |
| 12 | 2 | Semitrave della crociera di base Half base beam Semipoutre de chassis de base Halbträger für Kreuzgelenk | | 4,5x4,5mt | 3,200 | 0,590 | 0,770 | 1030 | 2060 |
| | | | | 3,8x3,8mt | 2,620 | 0,590 | 0,770 | 940 | 1880 |
| 13 | 4 | Blocco di appoggio Concrete pad Sabot en béton Betonfuss (B2) | | 3,600 | 0,800 | 0,600 | 3925 | 15700 | |
| 14 | 2 | Bilancino di traslazione folle Driven bogie Boggie fou Fahrschemel ohne motorantrieb | | 1,080 | 0,230 | 0,515 | 415 | 830 | |
| 15 | 2 | Bilancino di traslazione motorizzato Driving bogie Boggie motorisée Fahrschemel mit motorantrieb | | 1,550 | 0,500 | 0,515 | 535 | 1070 | |
| 16 | 26 | Blocco di zavorra Base ballast block Lest de base Grundballastblöcken (GB3) | | 3,600 | 1,200 | 0,300 | 2900 | 75400 | |
| City -1,7m | | | | | | | | | |
| 17 | 6 | Elemento di torre 1,7/1,5m 1,7/1,5m tower element 1,7/1,5m élément de mature 1,7/1,5m Turmstück | | 5,900 | 1,700 | 1,900 | 2205 | - | |
| 18 | - | Elemento di torre Tower element Elément de mature Turmstück | | 2,950 | 1,900 | 1,700 | 172 | - | |
| 19 | - | | | 5,900 | 1,900 | 1,700 | 2267 | - | |
| 20 | - | | | 11,800 | 1,900 | 1,700 | 4135 | - | |
| 21 | 1 | Tronchetto di fondazione Expendable foundation element Elément a sceller Fundamentanker | | 1,465 | 1,980 | 1,980 | 830 | - | |
| 22 | 1 | Trave principale della crociera di base Base main beam Poutre de chassis de base Hauptträger für Kreuzgelenk | | 6,524 | 0,780 | 0,960 | 2595 | - | |
| 23 | 2 | Semitrave della crociera di base Half base beam Semipoutre de chassis de base Halbträger für Kreuzgelenk | | 3,212 | 0,680 | 0,974 | 1235 | 2470 | |
| 24 | 4 | Blocco di appoggio Concrete pad Sabot en béton Betonfuss (B5) | | 3,600 | 0,900 | 0,750 | 5520 | 22080 | |
| 25 | 2 | Bilancino di traslazione folle Driven bogie Boggie fou Fahrschemel ohne motorantrieb | | 1,315 | 0,222 | 0,540 | 600 | 1200 | |
| 26 | 2 | Bilancino di traslazione motorizzato Driving bogie Boggie motorisée Fahrschemel mit motorantrieb | | 1,427 | 0,492 | 0,540 | 765 | 1530 | |

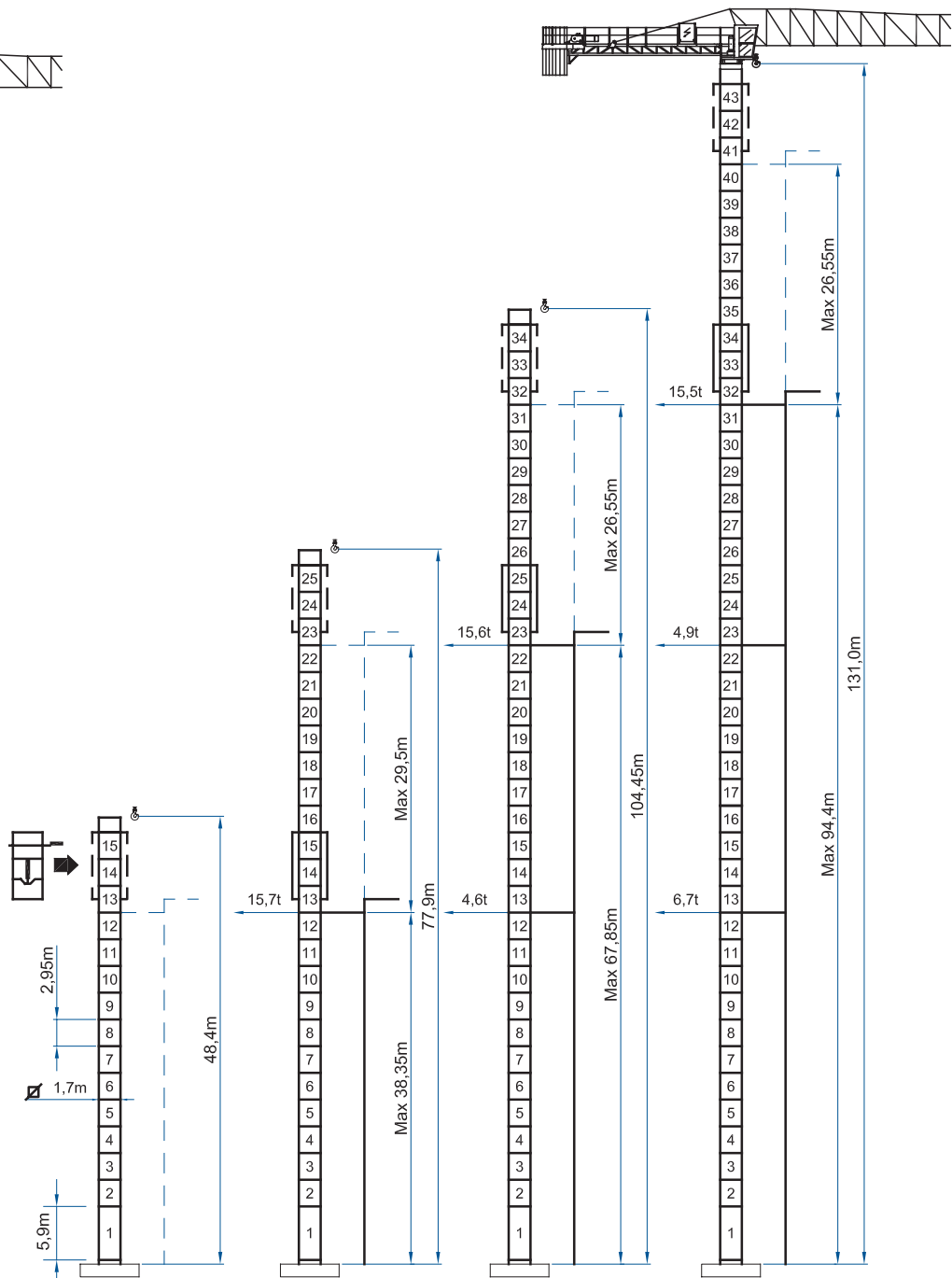
MRT 102 RI

rampante
 floor climbing
 telescopable sur dalles
 kletterkrane im gebaude



MRT 102 HC

a sopralzo idraulico
 external climbing
 telescopable
 kletterkrane



I dati riportati possono essere soggetti a modifiche senza preavviso - METAMORFOSI - MRT10201001

CARLO RAIMONDI GRU
 Corso Garibaldi 253
 20025 Legnano Milano ITALY
 Tel. +39 0331 548061
 Fax +39 0331 450400
 www.raimondigr.com



RAIMONDI

Building Tower Cranes since 1946